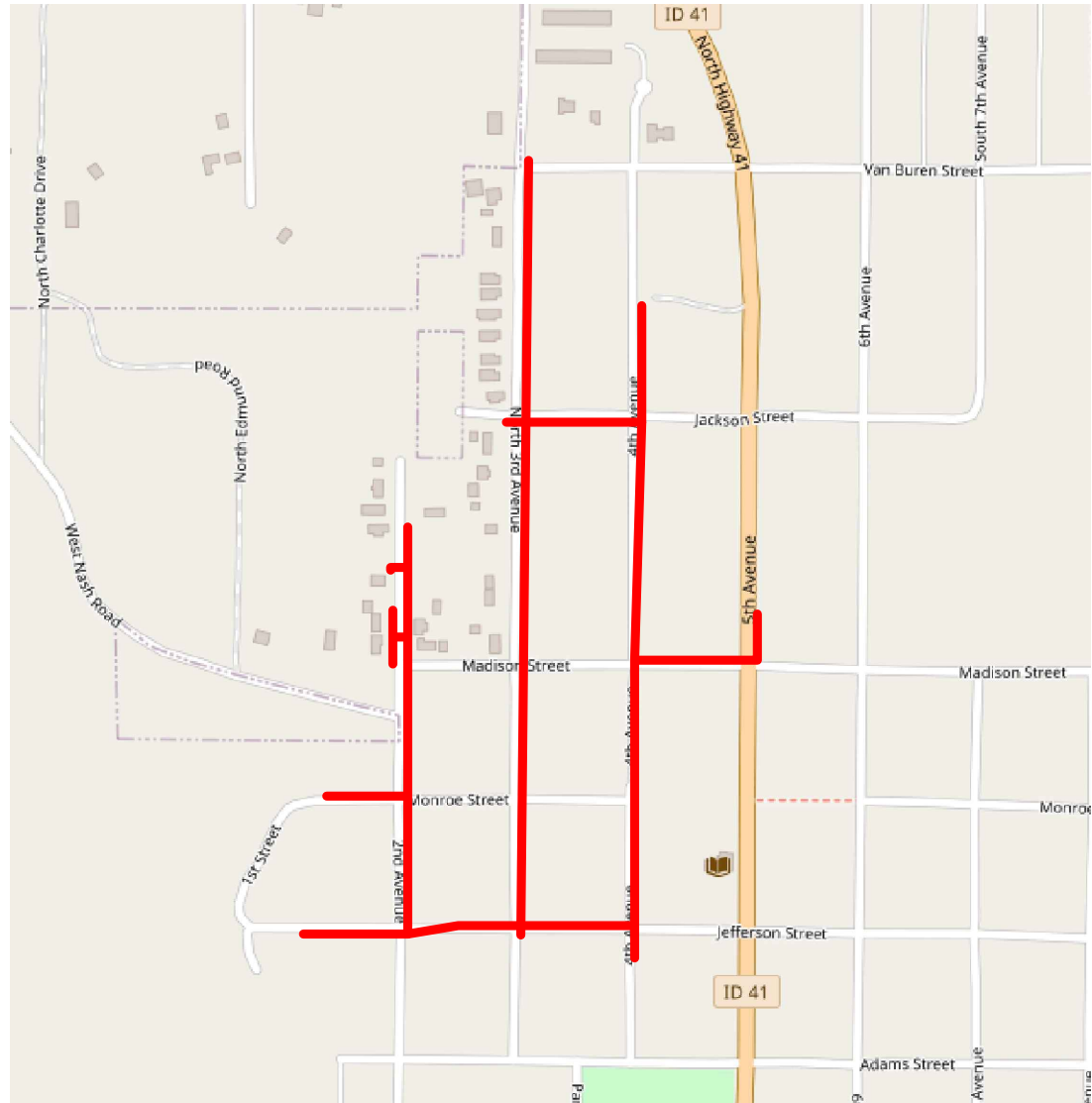


SPIRIT LAKE FTTH NW PHASE



SCOPE OF PROJECT

FIBER TO THE HOME PROJECT IN SPIRIT LAKE, ID.

CALL FOR LOCATES, TAG ALL FIBER, RECORD FIBER SEQUENTIALS

MATERIAL LIST

6M STRAND	7886'
RISERS	4
18" FGA	3
W-ARM	2
DROP VAULT	8
ANCHORS	9
LG VAULT	3

POLE COUNT

AVISTA DIST NEW 50
AVISTA NEW RISER 4
AVISTA ANCHORS 5

ABBREVIATIONS

ST LT - STREET LIGHT
RS - ROAD SIDE
FS - FIELD SIDE
B - BONDED
NB - NOT BONDED
TOP - TOP OUTSIDE POSITION
TIP - TIP INSIDE POSITION
BOP - BOTTOM OUTSIDE POSITION
BIP - BOTTOM INSIDE POSITION
D/W - DRIVEWAY
FSL - FIBER SLACK LOOP
OVL - OVERLASH
UG - UNDERGROUND

CONTACTS

AVISTA UTILITIES	BILL ANDERSON	(509) 879-2085
	SCOTT MEREDITH	(509) 495-2532
ZIPLY [FRT]	RON HELMECK	(208) 818-9221
FATBEAM	BRUCE HATHAWAY	(509) 334-1008
CHARTER	CAREY BORCHARDT	(509) 823-9256

LEGEND

	DISTRIBUTION POLE
	TRANSMISSION POLE
	SWITCH POLE
	STUB POLE
	COMPOSITE ARM
	GROUND
	EXISTING SIDEWALK ANCHOR
	NEW SIDEWALK ANCHOR
	EXISTING ANCHOR
	NEW ANCHOR
	EXISTING WOOD ARM
	NEW WOOD ARM
	SLACK LOOP
	DENOTES POLE WRAPPING
	TRANSITION TO/FROM UNDERGROUND
	NEW AERIAL FIBER
	EXISTING AERIAL FIBER
	NEW UG FIBER
	EXISTING UG FIBER



SPIRIT LAKE FTTH NW PHASE

PO4377

DESIGNED - DENNY MYERS 509-939-4260 DENNY@BIGBEARTELECOM.COM
 INTERMAX - CHRIS JASPER 208-660-2545 CJASPER@INTERMAXTEAM.COM

DATE	DRAWING REVISIONS	DATE
		3/15/2023
		SHEET
		1 of 6

GENERAL CONSTRUCTION NOTES

RESTORATION: ALL GROUND/RIGHT OF WAY JOBS WILL BE RESTORED TO ORIGINAL CONDITION, OR BETTER.

ALL BUILDING ENTRIES WILL BE SEALED AND COMPLETED TO CUSTOMER'S SATISFACTION.

BURIED FIBER OPTIC WARNING SIGNS SHALL BE PLACED AT EACH SIDE OF ALL ROAD CROSSING, CULVERTS, AND DITCHES AND IN A STRAIGHT RUNNING LINE WITH THE FIBER OPTIC CABLE. NO GRATER THEN 500' IN SEPARATION.

APPROVED DRAWINGS: CONTRACTOR WILL HAVE ON JOB SITE THE APPROVED, STAMPED DRAWINGS FROM THE UTILITY, AND OR FROM THE OSP MANAGER.

PERMITS: CONTRACTOR IS RESPONSIBLE FOR ALL PERMITS EXCEPT FOR STATE HWY, RAILROAD OR WATER CROSSING PERMITS, OR WHAT OTHER IS AGREED UPON. AND WILL COMPLY WITH ALL RULES AND REGULATIONS ASKED FOR BY THESE AGENCIES.

CONSTRUCTION: CONTRACTOR/ OSP MANAGER WILL COORDINATE AND NOTIFY 24 HRS PRIOR TO CONSTRUCTION BUILDING OWNERS OR TENANTS, TO GET ACCESS WITH WORK START TIMES TO BUILDING MANAGEMENT. WARNING TAPE 1' ABOVE AND TRACER WIRE IN ALL UG CONDUITS. SEAL ALL RISERS AND BUILDING ENTRIES.

FOLLOW ALL NESC RULES AND CONSTRUCTION GUIDELINES.

FIBER OPTIC PLACEMENT: NOTIFY OSP MANAGER IF ANY CHANGES TO DRAWINGS NEED TO BE PERFORMED. DO NOT MAKE RANDOM CHANGES WITHOUT PERMISSION FROM THE OSP MANAGER. SLACK STORAGE AND VAULT PLACEMENTS HAVE BEEN ENGINEERED WITH SEVERAL FACTORS IN MIND AND IF NEED TO BE MOVED THEY NEED TO BE STUDIED FOR LOADING AND OTHER REASONS.

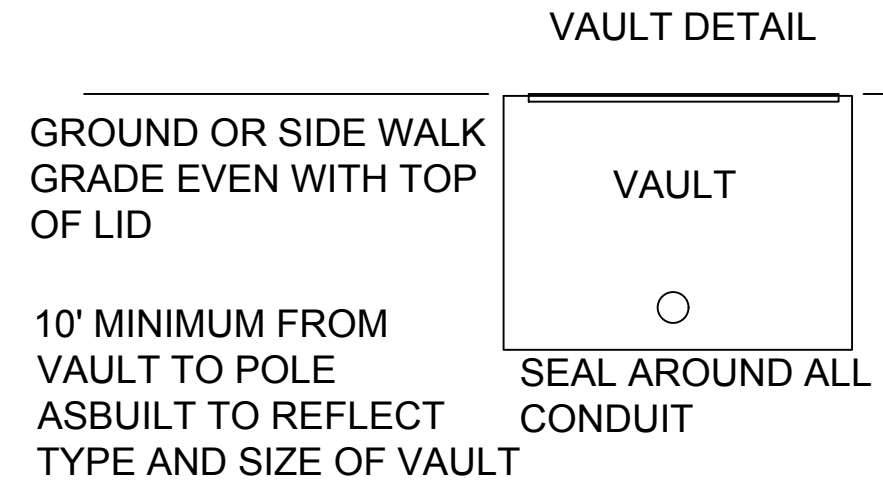
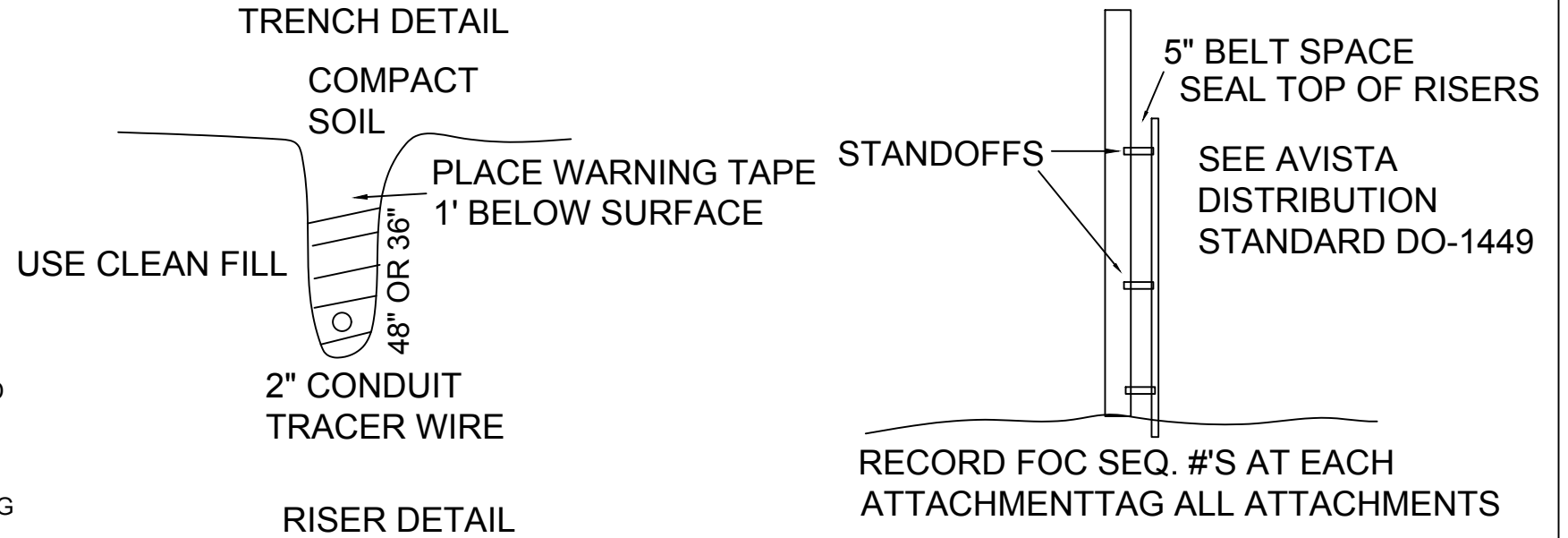
VAULTS: ALL FIBER SHALL BE MARKED AS TO THE DIRECTION IN EACH VAULT. RED-NORTH, GREEN-SOUTH, YELLOW-EAST, AND BLUE-WEST.

LOCATES: CONTRACTOR IS RESPONSIBLE FOR CALLING OF LOCATES AND IS RESPONSIBLE FOR REPAIR AND RESTORATION.

TAGGING AND RECORDING: RECORD SEQUENTIAL #'S AT ALL ATTACHMENTS AND ID TAG ALL ATTACHMENTS. RETURN AS-BUILT DRAWINGS TO OSP MANAGER IN A TIMELY MANNER.

SLACK STORAGE: 100' IN VAULTS WHERE THERE IS ROOM FROM. 200' AERIAL SLACK AND 50' IN ALL TELECO DEMARKS.

**BOND TO ALL UTILITY MGN'S
ALWAYS CALL FOR LOCATES**



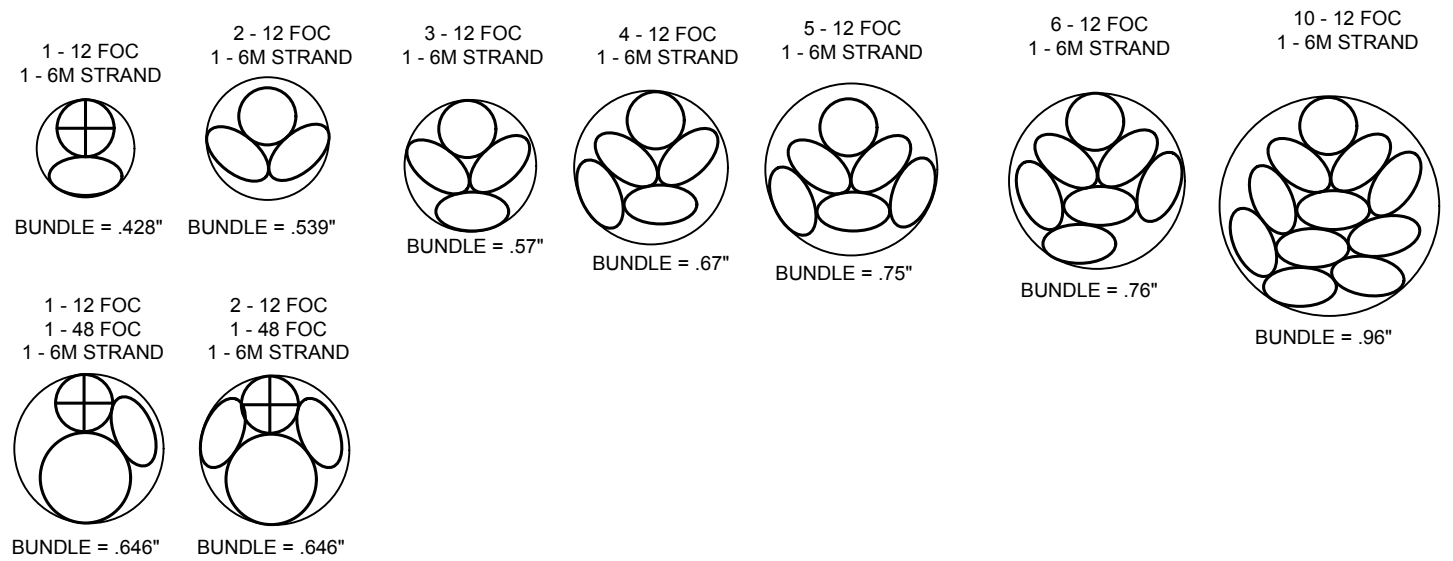
**Know what's below.
Call before you dig.**



SPIRIT LAKE FTTH NW PHASE

DESIGNED - DENNY MYERS 509-939-4260 DENNY@BIGBEARTELECOM.COM

DATE	DRAWING REVISIONS	DATE
		3/15/2023
		SHEET
		2 of 6

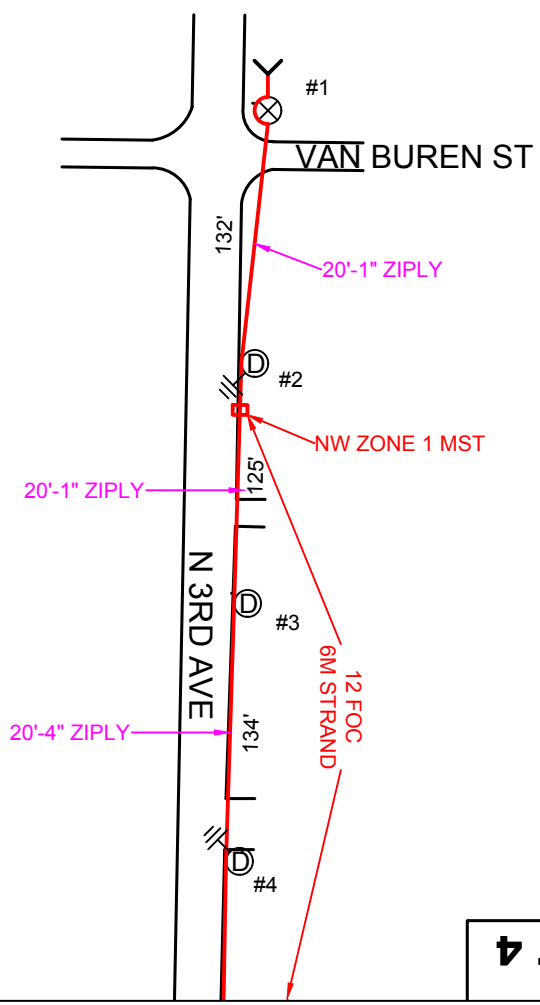


#1
 NO ID ZIPLY
 22'-10" ZIPLY DE
21'-1" INTERMAX DE
 C-5-30
ATTACH TO ZIPLY ANCHOR
16' LEAD, 3/4" ROD, 3 KNK
KEEP EAST SIDE CLEAR

#2
 081383 AVISTA
 24'-2" D-LOOP
 21'-8" ZIPLY JHOOK
 21'-4" ZIPLY JHOOK
 20'-5" ZIPLY B DDE
19'-5" INTERMAX RS
 C-4-40 37" GLC
 BOND TO MGN SW
ZIPLY: LOWER DROPS TO STRAND
AND REMOVE DEAD DROPS
INTERMAX: BOND TO MGN

#3
 702409 AVISTA
 25'-4" D-LOOP
 23' ST LT MAST
 20'-11" ZIPLY RS
19'-11" INTERMAX RS
 C-4-40 36" GLC
ZIPLY: REMOVE DEAD DROPS

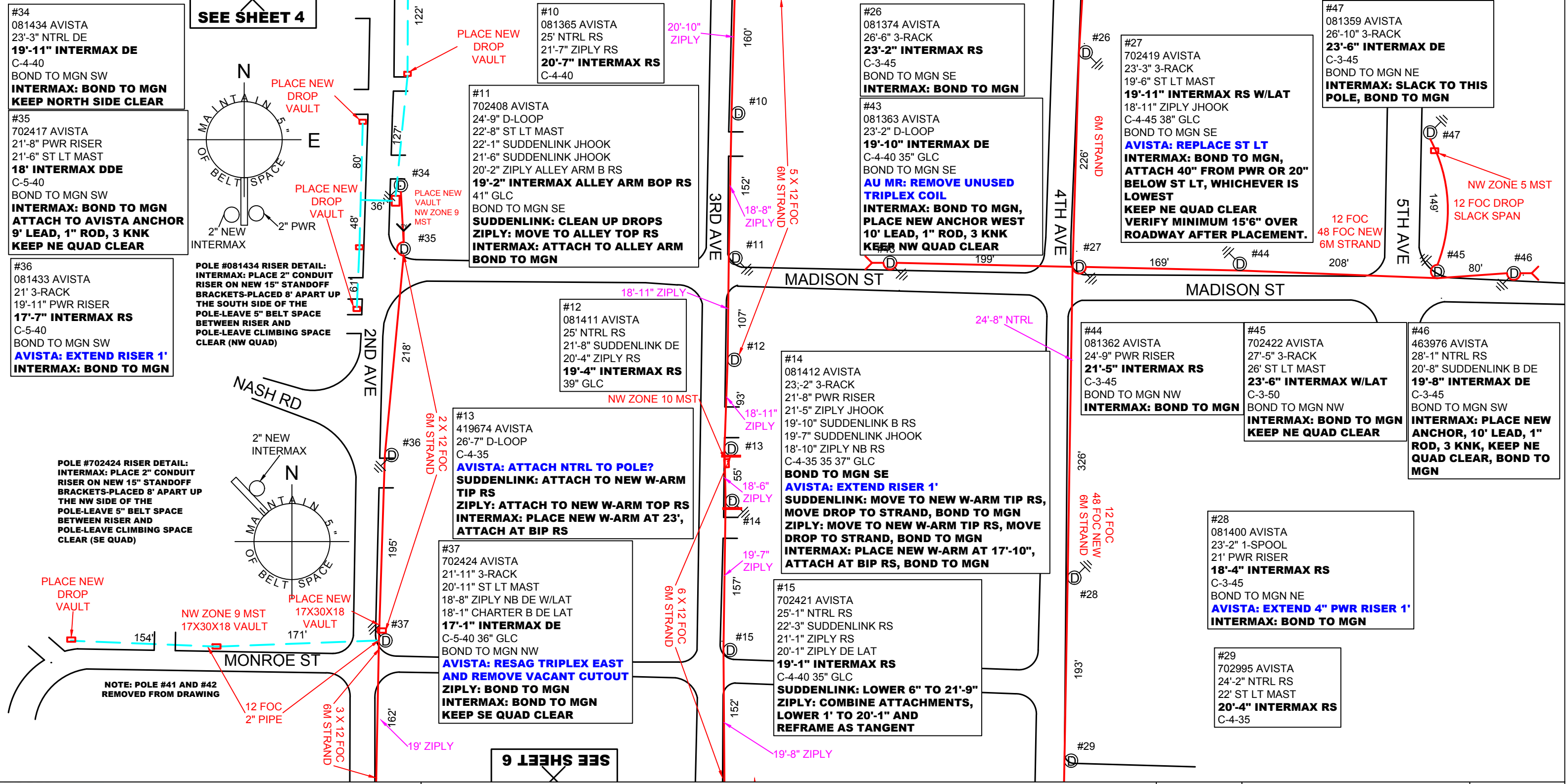
#4
 081379 AVISTA
 23'-11" D-LOOP
 20' ZIPLY NB RS
19' INTERMAX RS
 C-4-4 40" GLC
 BOND TO MGN NW
AVISTA: RESAG SECONDARY TO NORTH
ZIPLY: BOND TO MGN
INTERMAX: BOND TO MGN



SPIRIT LAKE FTTH NW PHASE

DESIGNED - DENNY MYERS 509-939-4260 DENNY@BIGBEARTELECOM.COM

DATE	DRAWING REVISIONS	DATE
		3/15/2023
		SHEET
		3 OF 6



SEE SHEET 4

SEE SHEET 6

Scale 1 : 100
0 50' 100'

SPIRIT LAKE FTTH NW PHASE

DESIGNED - DENNY MYERS 509-939-4260 DENNY@BIGBEARTELECOM.COM

DATE	DRAWING REVISIONS	DATE
		3/15/2023
		SHEET
		5 OF 6

#39
081425 AVISTA
28'-2" D-LOOP
24'-8" ZIPLY B RS
23'-7" CHARTER 18" FGA B RS
22'-7" FATBEAM B RS
21'-7" INTERMAX 18" FGA RS
C-3-45
BOND TO MGN NW
ZIPLY: PLACE 18" FGA DUE TO BEING OPPOSITE NTRL, BOND TO MGN
CHARTER: CHANGE FGA TO 18" FGA
FATBEAM: PLACE 18" FGA DUE TO BEING OPPOSITE NTRL, BOND TO MGN
MIFIBER: BOND TO MGN

#38
081427 AVISTA
27'-4" D-LOOP
24' ZIPLY B RS
23'-4" CHARTER NB DE
22'-4" FATBEAM B DE
22'-4" INTERMAX 18" FGA RS
C-4-45
BOND TO MGN SE
ZIPLY: PLACE 18" FGA DUE TO BEING OPPOSITE NTRL, BOND TO MGN
CHARTER: MOVE DG BOND TO EAST SIDE OF POLE TO CLEAR CLIMBING SPACE
FATBEAM: MOVE DG BOND TO EAST SIDE OF POLE TO CLEAR CLIMBING SPACE

#16
081413 AVISTA
23'-11" 3-RACK
20'-1" SUDDENLINK B RS
19'-2" ZIPLY NB DE
18'-2" INTERMAX RS
C-4-45 38" GLC
BOND TO MGN W
ZIPLY: BOND TO MGN
INTERMAX: BOND TO MGN

#17
081414 AVISTA
23' PWR RISER
19'-8" SUDDENLINK B DE
18'-8" INTERMAX RS
C-4-45 37" GLC
BOND TO MGN NE
INTERMAX: BOND TO MGN

#30
081401 AVISTA
27'-8" D-LOOP
23'-6" INTERMAX RS
C-3-45
BOND TO MGN SW
AU MR: PLACE STAND OFFS
INTERMAX: BOND TO MGN

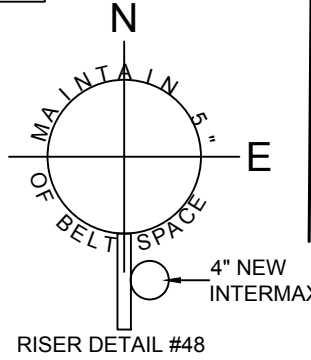
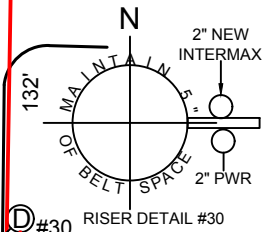
POLE #081401 RISER DETAIL:
INTERMAX: PLACE 2" CONDUIT
RISER ON NEW 12" STANDOFF
BRACKETS PLACED 8' APART UP
THE EAST SIDE OF THE POLE,
LEAVE 5" BELT SPACE BETWEEN,
RISER AND POLE
LEAVE CLIMBING SPACE
CLEAR (NE QUAD)

#31
081405 AVISTA
29'-2" D-LOOP
23'-2" CHARTER B DE
21'-11" FATBEAM B DE
20'-11" INTERMAX RS
C-3-45
BOND TO MGN NW
INTERMAX: BOND TO MGN

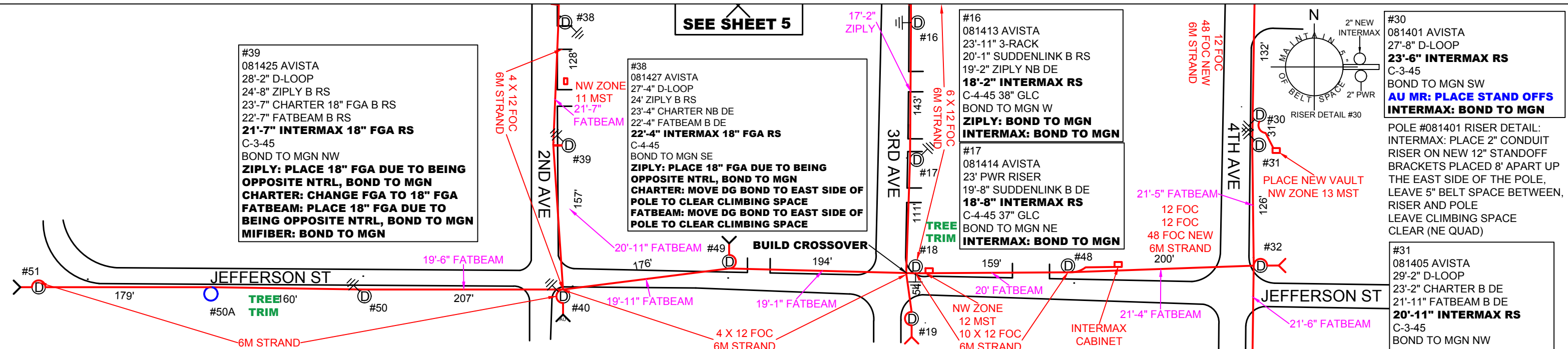
#32
702423 AVISTA
29'-2" NTRL RS
25'-10" ST LT MAST
23'-5" CHARTER RS W/LAT
22'-4" FATBEAM RS W/LAT
21'-4" INTERMAX RS W/LAT
C-4-45
AVISTA ANCHOR 22' LEAD
INTERMAX: PLACE NEW DG
& ANCHOR EAST, 12' LEAD,
1" ROD, 3 KNK, KEEP NE
QUAD CLEAR

#33
081406 AVISTA
25'-9" 3-RACK
25'-5" D-LOOP
22'-5" CHARTER B RS
21'-5" FATBEAM B DE
20'-1" INTERMAX DE
C-3-45
BOND TO MGN NW
AU MR: CLIP UP PWR SOUTH
CHARTER: LOWER 4" TO
22'-1", BOND TO MGN
FATBEAM: LOWER 4" TO
21'-1", BOND TO MGN
INTERMAX: ATTACH TO
FATBEAM ANCHOR, 15' LEAD,
1" ROD, 3 KNK, KEEP SE
QUAD CLEAR, BOND TO MGN

SEE SHEET 5



POLE #081420 RISER DETAIL:
INTERMAX: PLACE 2" CONDUIT
RISER ON NEW 12" STANDOFF
BRACKETS-PLACED 8' APART UP
THE SOUTH SIDE OF THE
POLE-LEAVE 5" BELT SPACE
BETWEEN RISER AND
POLE-LEAVE CLIMBING SPACE
CLEAR (NW QUAD)



#50A
AU MR: INSET 45' CL3 POLE 160'
WEST OF POLE #50
CHARTER: ATTACH TO NEW POLE
AT 23'-6" RS, BOND TO MGN
FATBEAM: ATTACH TO NEW POLE
AT 22'-6" RS, BOND TO MGN
INTERMAX: ATTACH TO NEW
POLE AT 21'-6" RS, BOND TO MGN

#50
081422 AVISTA
27'-8" D-LOOP
23'-6" CHARTER B DDE
22'-5" FATBEAM B DDE
21'-5" INTERMAX RS
C-4-45
BOND TO MGN NW
INTERMAX: BOND TO MGN

#40
702403 AVISTA
28'-11" D-LOOP
24'-11" ST LT MAST
22'-11" ZIPLY B RS LAT
21'-2" CHARTER 18" FGA B RS
20'-2" FATBEAM B RS
19'-2" INTERMAX RS W/LAT
C-3-50
BOND TO MGN NW
INTERMAX: BOND TO MGN,
ATTACH TO AVISTA ANCHOR
14' LEAD, 1" ROD, 3 KNK
KEEP SE QUAD CLEAR

#49
426327 AVISTA
25'-10" NTRL RS
23'-1" CHARTER RS
22'-1" FATBEAM RS
21'-1" INTERMAX RS
C-3-40
CHARTER: LOWER 7" TO 22'-6"
FATBEAM: LOWER 7" TO 21'-6"
INTERMAX: ATTACH TO FATBEAM
ANCHOR, 8' LEAD, 1" ROD, 3 KNK,
KEEP NW QUAD CLEAR

#18
081415 AVISTA
25'-5" 3-RACK
20'-11" CHARTER B RS
19'-10" FATBEAM B RS
18'-10" INTERMAX RS
C-3-45
BOND TO MGN S
INTERMAX: BOND TO MGN,
TREE TRIM
AROUND POLE, VERIFY
15'-6" OVER ROADWAY
AFTER PLACEMENT

#19
702407 AVISTA
23'-1" D-LOOP
21'-5" ST LT MAST
18'-1" INTERMAX DE
37" GLC
INTERMAX: PLACE NEW
ANCHOR, 10' LEAD, 1"
ROD, 3 KNK, KEEP EAST
SIDE CLEAR, TREE TRIM
AROUND POLE, VERIFY
15'-6" OVER ROADWAY
AFTER PLACEMENT

#48
081420 AVISTA
30'-6" NTRL RS
23'-7" CHARTER RS
22'-7" FATBEAM RS
21'-7" INTERMAX RS
C-4-45

#51
081423 AVISTA
27' 3-RACK
23'-4" CHARTER B DE
22'-4" FATBEAM B DE
21'-4" INTERMAX DE
C-4-40 40" GLC
BOND TO MGN SE
INTERMAX: 21'-4" DE, BOND TO
MGN, ATTACH TO EXISTING
ANCHOR WEST, 15' LEAD, 1"
ROD, 3 KNK



SPIRIT LAKE FTTH NW PHASE
DESIGNED - DENNY MYERS 509-939-4260 DENNY@BIGBEARTELECOM.COM

DATE	DRAWING REVISIONS	DATE
		3/15/2023
		SHEET
		6 OF 6